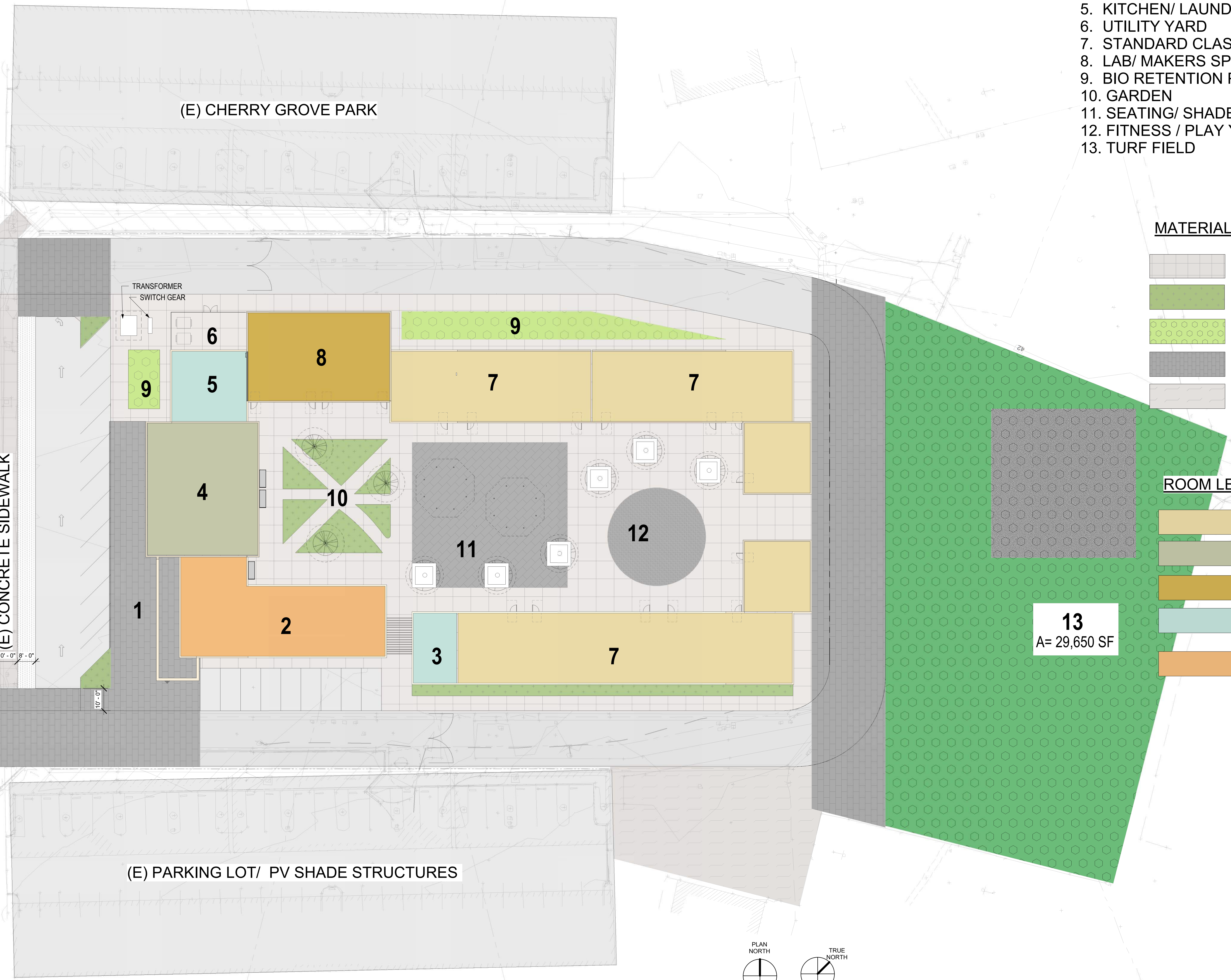


LEONARD DRIVE

(E) CONCRETE SIDEWALK

10'-0" 8'-0"  
10'-0"

TRANSFORMER SWITCH GEAR



(E) CHERRY GROVE PARK

(E) PARKING LOT/ PV SHADE STRUCTURES

PROGRAM

1. MAIN ENTRANCE OUTDOOR SPACE
2. MAIN LOBBY/ OFFICES / ADMIN./ COUNSELORS-WELLNESS
3. TOILET ROOMS
4. MPR
5. KITCHEN/ LAUNDRY/ STORAGE
6. UTILITY YARD
7. STANDARD CLASSROOMS
8. LAB/ MAKERS SPACE CLASSROOMS
9. BIO RETENTION PLANTER
10. GARDEN
11. SEATING/ SHADE STRUCTURES
12. FITNESS / PLAY YARD
13. TURF FIELD

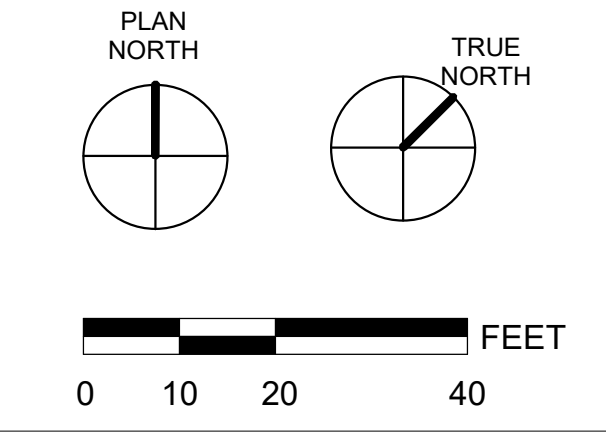
MATERIAL LEGEND

- CONCRETE PAVING
- LANDSCAPE
- BIORETENTION PLANTER (N) PERMEABLE PAVERS
- AC PAVING

ROOM LEGEND

- CLASSROOMS
- MPR
- LABS
- SERVICES
- MAIN OFFICE, ENTRY, ADMIN.

13  
A= 29,650 SF



SITE PLAN - OPTION 1  
1" = 20'-0"

**HKIT** ARCHITECTS  
538 NINTH STREET SUITE 240 • OAKLAND, CA 94607  
T 510 625 9800 • F 510 625 9801 • WWW.HKIT.COM

LINCOLN CONTINUATION HIGH SCHOOL

Leonard Drive (Next to Cherry Grove Park), San Leandro CA 94577  
JOB NO. 20343  
DRAWN Author  
CHECKED Checker  
JOB CAPTAIN Approver

ISSUE

Δ	DATE	DESCRIPTION
1	3/25/21	PROGRESS

DRAWING TITLE  
SITE PLAN OPTION 1

SCALE As indicated  
**A1.01**  
COPYRIGHT © 2016 HKIT ARCHITECTS

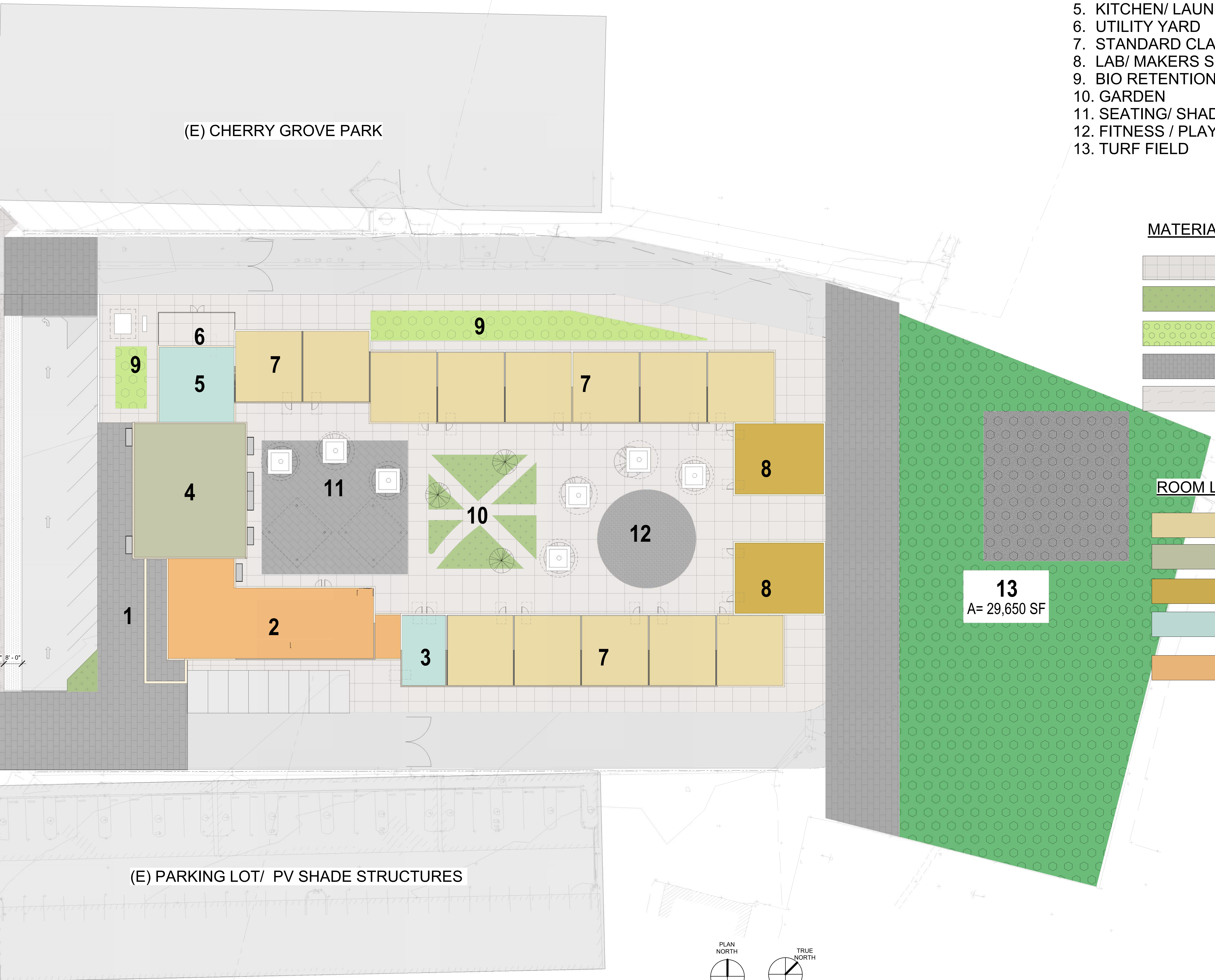
LEONARD DRIVE

(E) CHERRY GROVE PARK

(E) CONCRETE SIDEWALK

(E) PARKING LOT/ PV SHADE STRUCTURES

10' - 0" 8' - 0"



PROGRAM

1. MAIN ENTRANCE OUTDOOR SPACE
2. MAIN LOBBY/ OFFICES / ADMIN./ COUNSELORS-WELLNESS
3. TOILET ROOMS
4. MPR
5. KITCHEN/ LAUNDRY/ STORAGE
6. UTILITY YARD
7. STANDARD CLASSROOMS
8. LAB/ MAKERS SPACE CLASSROOMS
9. BIO RETENTION PLANTER
10. GARDEN
11. SEATING/ SHADE STRUCTURES
12. FITNESS / PLAY YARD
13. TURF FIELD

MATERIAL LEGEND

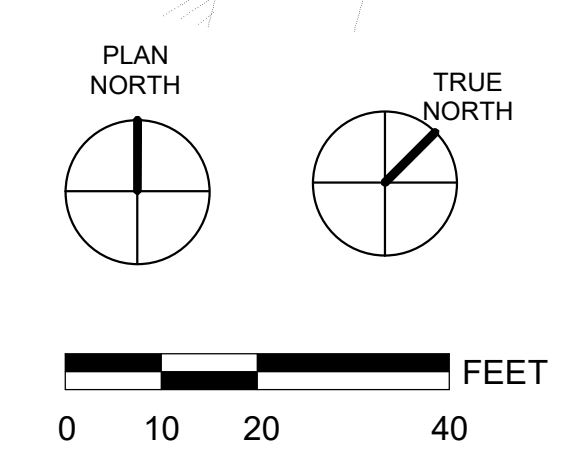
- CONCRETE PAVING
- LANDSCAPE
- BIORETENTION PLANTER
- (N) PERMEABLE PAVERS
- AC PAVING

ROOM LEGEND

- CLASSROOMS
- MPR
- LABS
- SERVICES
- MAIN OFFICE, ENTRY, ADMIN.

ISSUE	DATE	DESCRIPTION
1	3/25/21	PROGRESS

SITE PLAN - OPTION 2  
1" = 20'-0"





ELECTRICAL TRANSFORMER & SWITCH GEAR

SHOWN: MOBILE ROUND BENCH TABLES 20X8 = 160 PEOPLE

### LINCOLN CONTINUATION HIGH SCHOOL

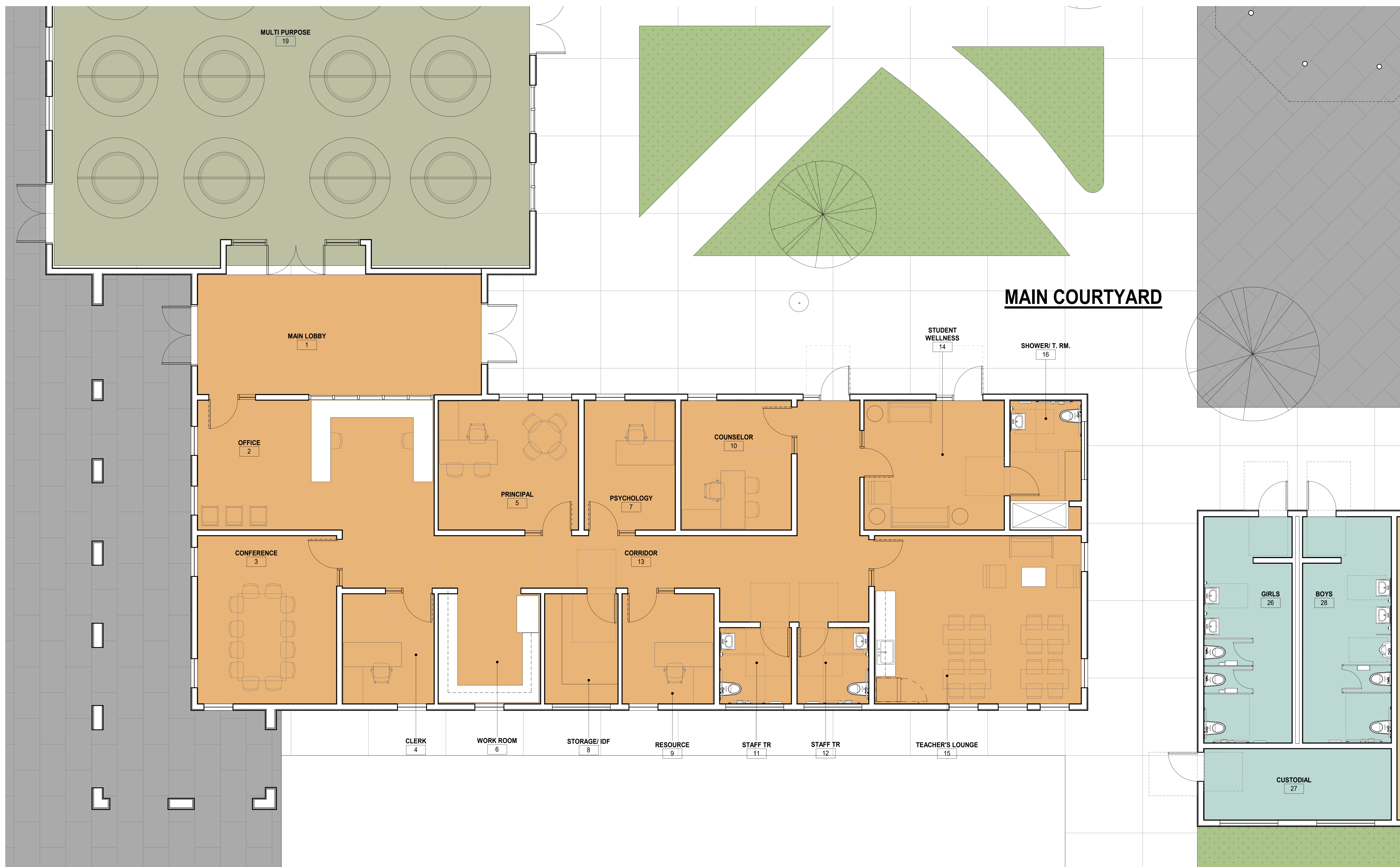
Leonard Drive (Next to Cherry Grove Park), San Leandro CA 94577  
 JOB NO. 20343  
 DRAWN DAK  
 CHECKED Checker  
 JOB CAPTAIN DAK

ISSUE

△	DATE	DESCRIPTION
1	3/25/21	PROGRESS

DRAWING TITLE  
**ENLARGED PARTIAL FLOOR PLAN WEST - OPTION 1**

**1 ENLARGED FLOOR PLAN - OPTION 1**  
 1/8" = 1'-0"



**MAIN COURTYARD**

1 FLOOR PLAN - OPTION 1 - ADMIN. AND FOYER  
1/4" = 1'-0"



**LINCOLN CONTINUATION HIGH SCHOOL**

Leonard Drive (Next to Cherry Grove Park), San Leandro CA 94577  
JOB NO. 20343  
DRAWN Author  
CHECKED Checker  
JOB CAPTAIN Approver

ISSUE

△	DATE	DESCRIPTION

DRAWING TITLE  
ENLARGED FLOOR PLAN - OPTION 1 - ADMIN. AND FOYER

SCALE 1/4" = 1'-0"

**A2.01b**  
COPYRIGHT © 2016 HKIT ARCHITECTS

4/20/2021 5:12:55 PM

C:\Users\lomonagas\Documents\Revit Local Files\20343\_LHS\_A\_Central\_lomonagas\AVSG.rvt



**LINCOLN  
 CONTINUATION  
 HIGH SCHOOL**

Leonard Drive (Next to Cherry Grove  
 Park), San Leandro CA 94577  
 JOB NO. 20343  
 DRAWN Author  
 CHECKED Checker  
 JOB CAPTAIN Approver

ISSUE

△	DATE	DESCRIPTION

DRAWING TITLE  
**ENLARGED FLOOR  
 PLAN - OPTION 1 -  
 MAKER'S SPACE,  
 LABORATORY,  
 KITCHEN**

**1 FLOOR PLAN - OPTION 1 - MAKER'S SPACE, LAB, KITCHEN**  
 1/4" = 1'-0"



WALL FOLDING TABLES

1 ENLARGED FLOOR PLAN - OPTION 2  
1/8" = 1'-0"

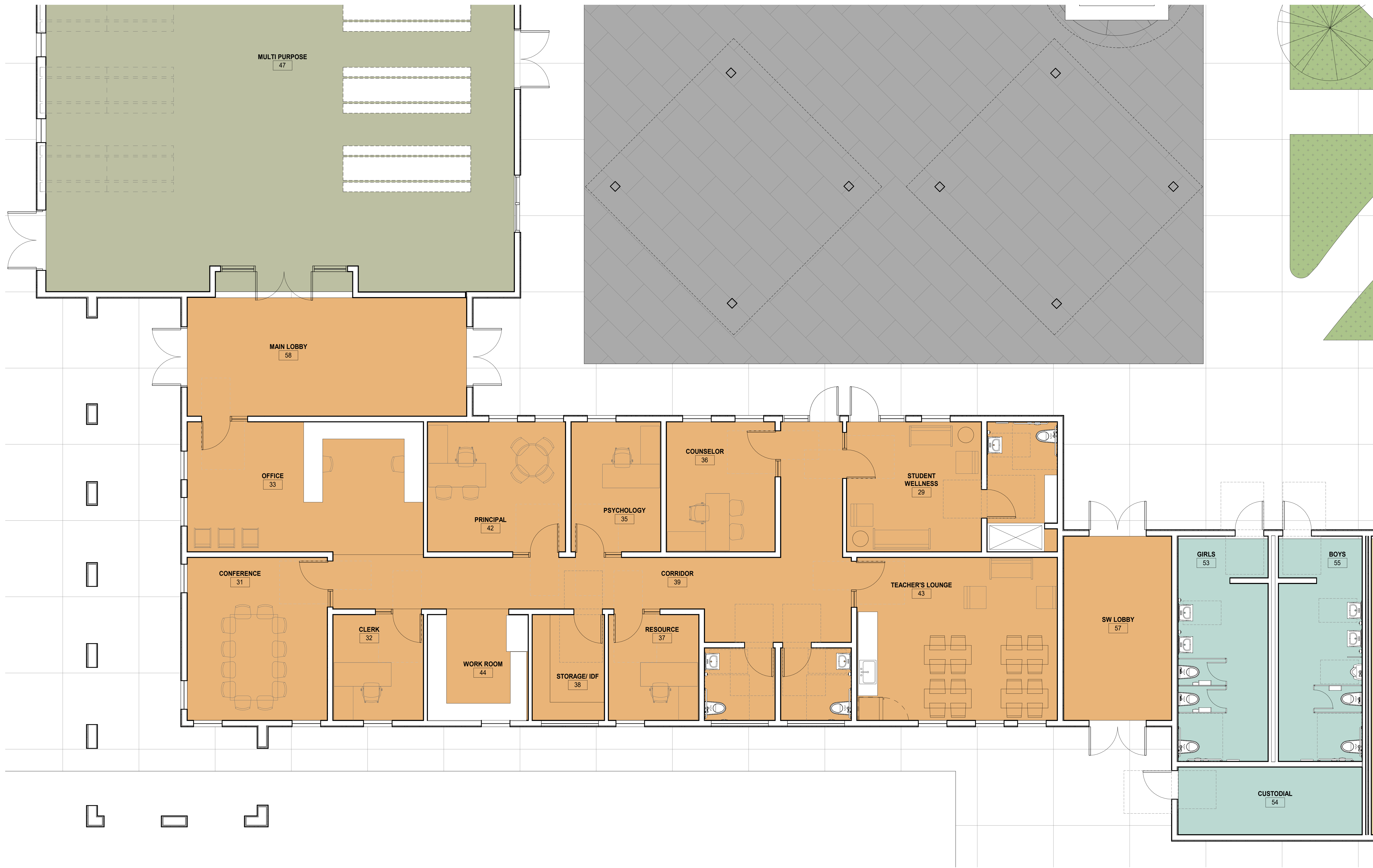
**LINCOLN CONTINUATION HIGH SCHOOL**

Leonard Drive (Next to Cherry Grove Park), San Leandro CA 94577  
 JOB NO. 20343  
 DRAWN DAK  
 CHECKED Checker  
 JOB CAPTAIN Approver

ISSUE	DATE	DESCRIPTION

DRAWING TITLE  
ENLARGED PARTIAL FLOOR PLAN WEST OPTION 2

SCALE 1/8" = 1'-0"



1 FLOOR PLAN - OPTION 2 - ADMIN AND FOYER  
1/4" = 1'-0"

**HKIT** ARCHITECTS  
 538 NINTH STREET SUITE 240 • OAKLAND, CA 94607  
 T 510 625 9800 • F 510 625 9801 • WWW.HKIT.COM

**LINCOLN CONTINUATION HIGH SCHOOL**

Leonard Drive (Next to Cherry Grove Park), San Leandro CA 94577  
 JOB NO. 20343  
 DRAWN Author  
 CHECKED Checker  
 JOB CAPTAIN Approver  
 ISSUE

△	DATE	DESCRIPTION

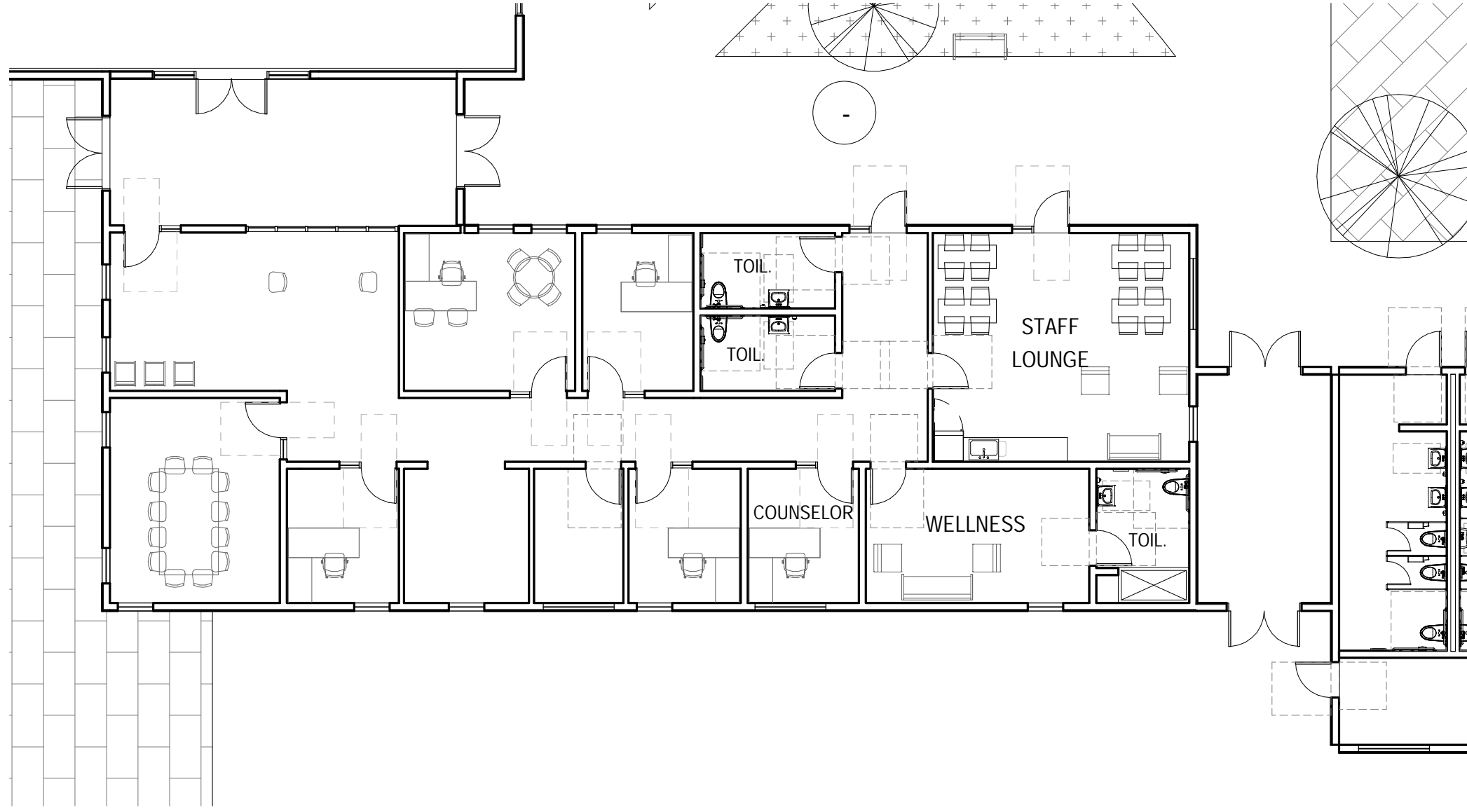
DRAWING TITLE  
 ENLARGED FLOOR PLAN OPTION 2 - ADMIN. AND FOYER

SCALE 1/4" = 1'-0"  
**A2.02b**  
COPYRIGHT © 2016 HKIT ARCHITECTS

1

# FLOOR PLAN - ALTERNATE ADMIN PLAN

3/32" = 1'-0"



LINCOLN CONTINUATION  
HIGH SCHOOL  
Leonard Drive (Next to Cherry Grove Park), San Leandro CA 94577

ALTERNATE ADMIN PLAN

Job No.: 20343  
Scale:

Date: 04/20/21  
By: Author  
Reference:

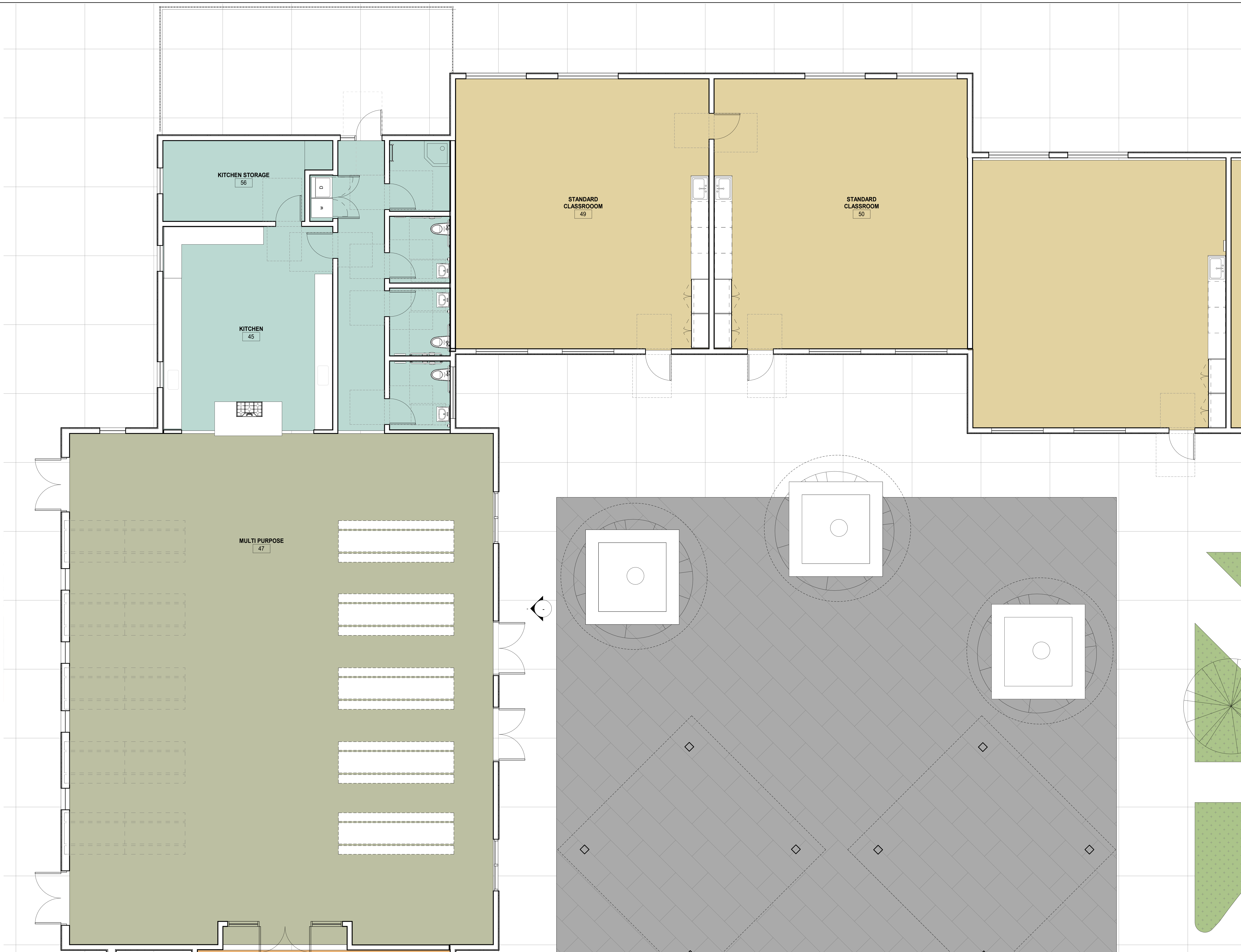
**HKIT** ARCHITECTS

538 NINTH STREET, SUITE 240 • OAKLAND, CA 94607 • T 510 625 9800 • F 510 625 9801 • WWW.HKIT.COM

COPYRIGHT © 2019 HKIT ARCHITECTS

A2.01-





**LINCOLN  
 CONTINUATION  
 HIGH SCHOOL**

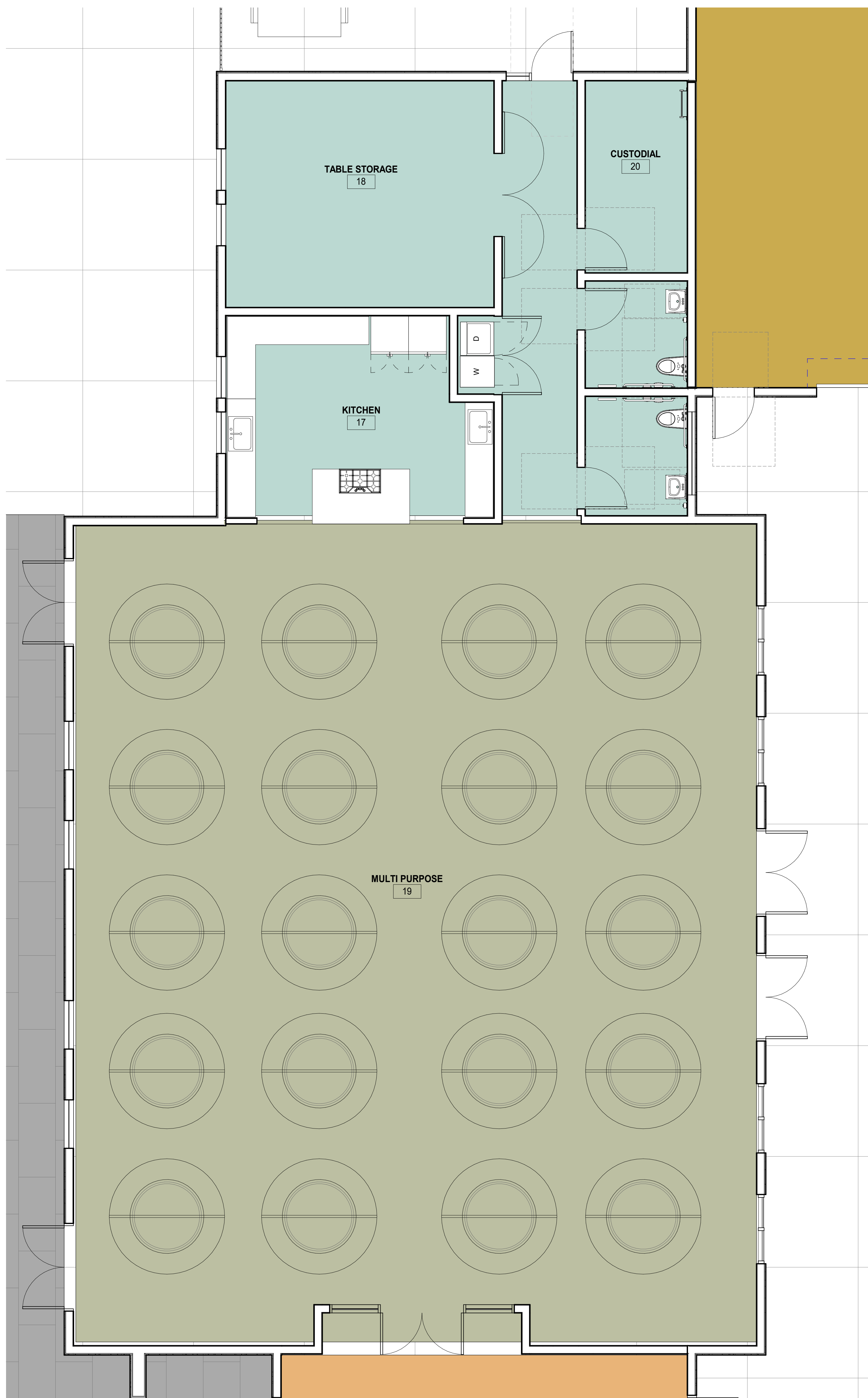
Leonard Drive (Next to Cherry Grove Park), San Leandro CA 94577  
 JOB NO. 20343  
 DRAWN Author  
 CHECKED Checker  
 JOB CAPTAIN Approver

ISSUE

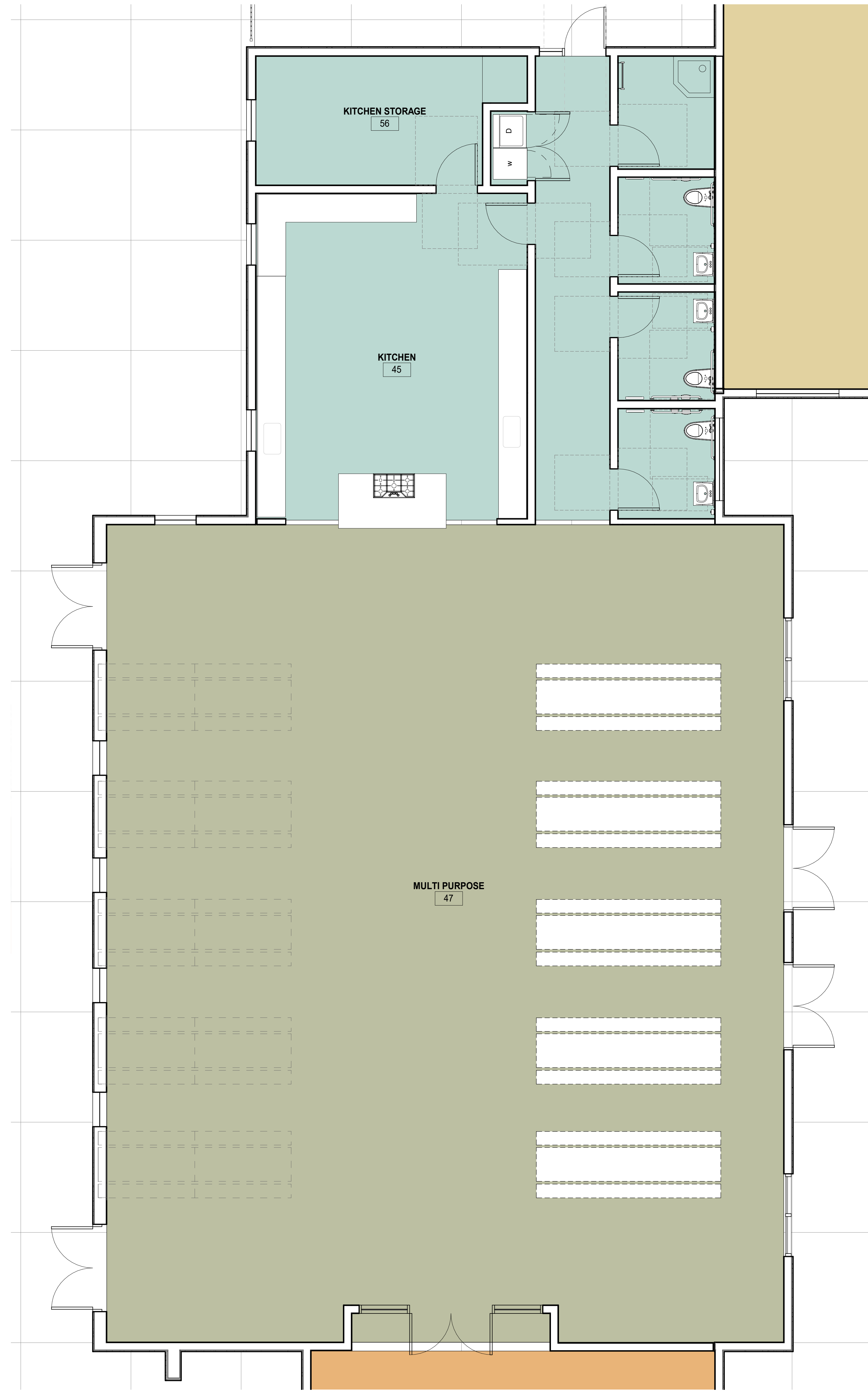
Δ	DATE	DESCRIPTION

DRAWING TITLE  
**ENLARGED FLOOR  
 PLAN OPTION 2 -  
 CLASSROOMS AND  
 KITCHEN**

**1** FLOOR PLAN - OPTION 2 - CLASSROOMS AND KITCHEN  
 1/4" = 1'-0"



1 FLOOR PLAN - OPTION 1 - MPR  
1/4" = 1'-0"



2 FLOOR PLAN - OPTION 2 - MPR  
1/4" = 1'-0"

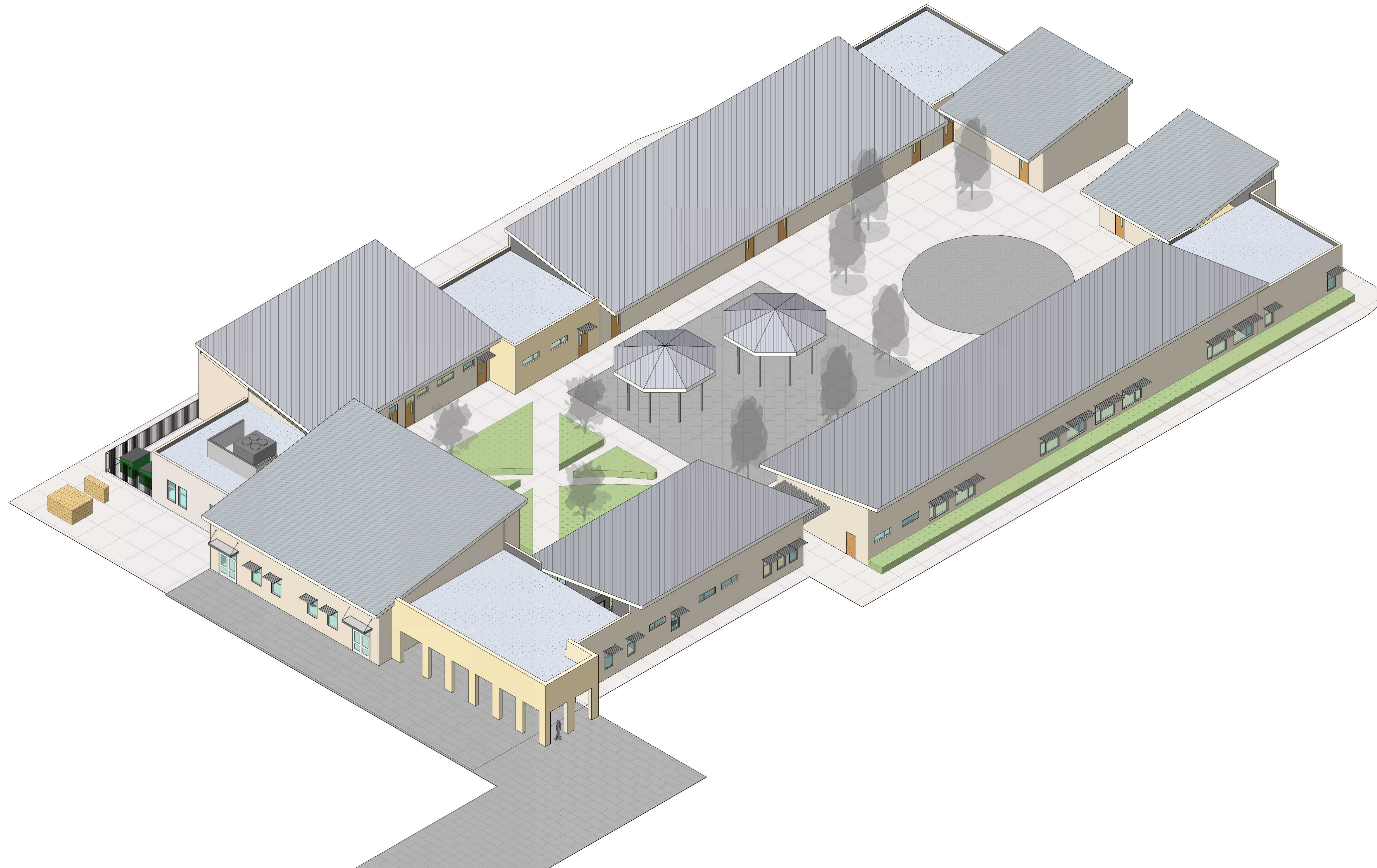


LINCOLN CONTINUATION HIGH SCHOOL

Leonard Drive (Next to Cherry Grove Park), San Leandro CA 94577  
JOB NO. 20343  
DRAWN Author  
CHECKED Checker  
JOB CAPTAIN Approver

ISSUE	DATE	DESCRIPTION

DRAWING TITLE  
FLOOR PLANS - MPR OPTIONS



OPTION 1 - VIEW 1

**LINCOLN  
CONTINUATION  
HIGH SCHOOL**

Leonard Drive (Next to Cherry Grove  
Park), San Leandro CA 94577  
JOB NO. 20343

DRAWN Author

CHECKED Checker

JOB CAPTAIN Approver

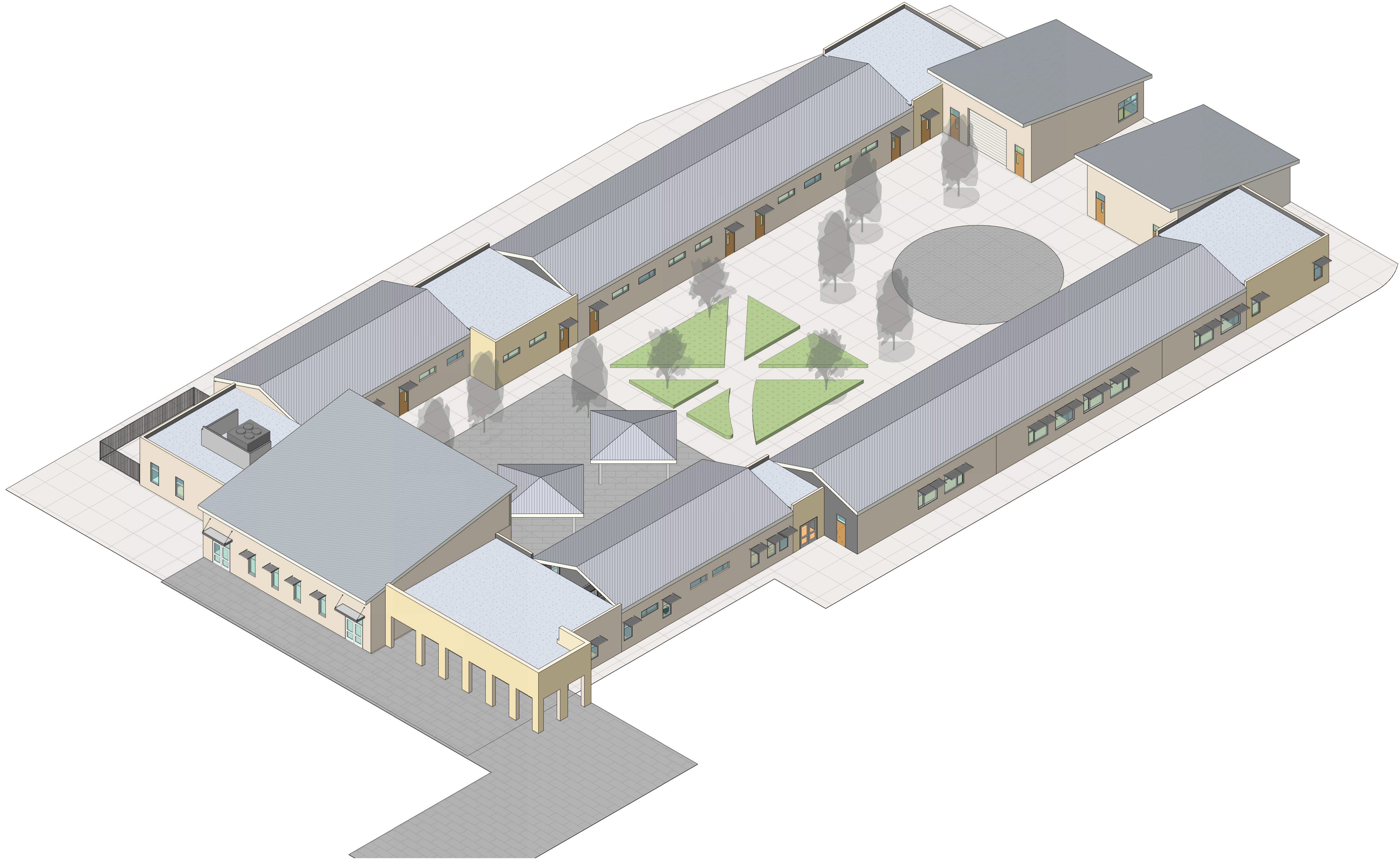
ISSUE

Δ	DATE	DESCRIPTION

DRAWING TITLE  
**PERSPECTIVES -  
SITE PLAN  
OPTION 1 VIEW 1**

SCALE  
**G1.01a**  
COPYRIGHT © 2016 HKIT ARCHITECTS





OPTION 2 - VIEW 1

LINCOLN  
 CONTINUATION  
 HIGH SCHOOL

Leonard Drive (Next to Cherry Grove  
 Park), San Leandro CA 94577  
 JOB NO. 20343  
 DRAWN Author  
 CHECKED Checker  
 JOB CAPTAIN Approver

ISSUE

DATE	DESCRIPTION

DRAWING TITLE  
 PERSPECTIVES -  
 SITE PLAN  
 OPTION 2 VIEW 1

SCALE  
**G1.02a**  
COPYRIGHT © 2016 HKIT ARCHITECTS



OPTION 2 - VIEW 2

**LINCOLN  
 CONTINUATION  
 HIGH SCHOOL**

Leonard Drive (Next to Cherry Grove  
 Park), San Leandro CA 94577  
 JOB NO. 20343  
 DRAWN Author  
 CHECKED Checker  
 JOB CAPTAIN Approver

ISSUE

△	DATE	DESCRIPTION

DRAWING TITLE  
**PERSPECTIVES -  
 SITE PLAN  
 OPTION 2 VIEW 2**