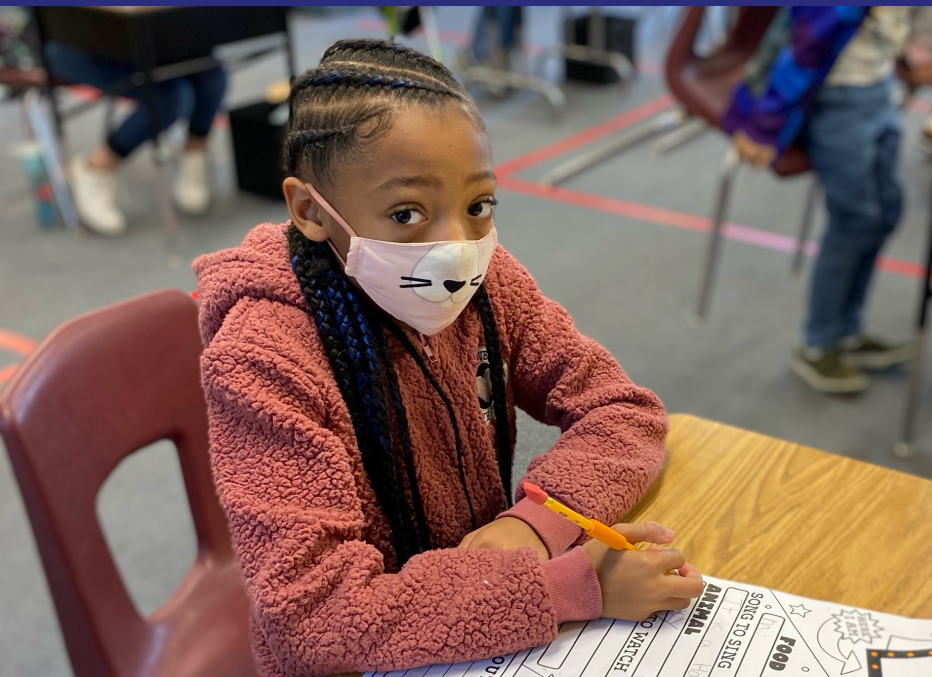
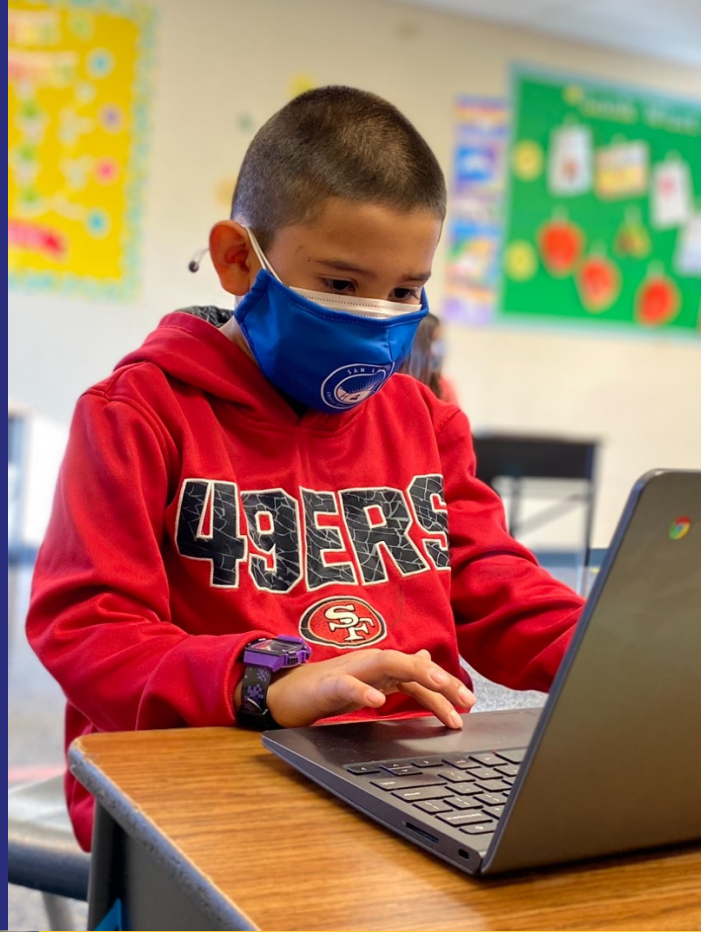


# SAN LEANDRO UNIFIED REOPENING PLAN 2020-2021



Superintendent: Dr. Mike McLaughlin  
Address: 835 E. 14th Street, Suite 200  
San Leandro, CA 94577

Target Reopening Date: To be determined

Submission Date: December 2020\*

School Type: Public School District

District COVID Liaison: Rocky Medeiros, Director of Safety and Emergency Services

Phone: (510) 756-7998 / Email: [rmedeiros@slusd.us](mailto:rmedeiros@slusd.us)

**\*THIS PLAN IS SUBJECT TO CHANGE BASED ON CALIFORNIA AND ALAMEDA COUNTY PUBLIC HEALTH DEPARTMENT GUIDANCE AND LABOR AGREEMENT NEGOTIATIONS.**



# How to use this guide



## Stay connected and informed

As we begin our phased approach to welcoming students back to our campuses, this comprehensive guide outlines the safety protocols and procedures we have developed to keep our community safe.

As you will see, we have been working diligently to prepare our facilities to meet the many standards established by the Alameda County Public Health Department (ACPHD) to effectively reduce the spread of COVID-19.

A key step in this process is helping you and your children understand your very active role in this plan. Review this guide thoroughly to understand what is being required from you and your family when you return to campus. Your collaboration through this challenging school year has shown the strength of our shared commitment to our students. This strong partnership must continue during our reopening.

We appreciate your patience and understanding as we navigate these complexities, while we also continue to provide a high-quality distance learning program that serves all of our students and families.

## Where do I find information about...

**HOW YOUR INPUT HAS GUIDED THIS PLAN**  
Process & Guiding Values p. 3

**PHASED REOPENING OVERVIEW**  
Returning to In-Person Learning p. 4

**HOW SCIENCE WILL KEEP US SAFE**  
What We Know About COVID-19 p. 9  
Contact Tracing & COVID Testing p. 10  
Personal Protective Equipment p. 11

**HOW OUR SCHOOLS WILL STAY SAFE AND CLEAN**  
Site Procedures p. 12  
Cleaning Routines p. 15

**HOW WE SUPPORT OUR COMMUNITY**  
Staff Training p. 17  
Family Education p. 17  
Returning to Campus Checklist p. 18

**OTHER RESOURCES & FURTHER INFORMATION**  
Schools to be reopened p. 20

# Our Process & Guiding Values



## Your voice helped create our plan

From the moment our school facilities closed in March, we have relied heavily on community input to put protocols and processes in place for our eventual return. This input has informed the work of our COVID -19 Response Team and forms the foundation of the details of our reopening plan.

Our Reopening Schools Task Force and Working Groups included teachers, parents, classified staff, and principals in collaboration with district leadership. **We thank and acknowledge them for their hard work!**

**We have also spent many months gathering input from concerns and ideas expressed at school site-based parent meetings, from collaboration with our labor unions, and from our communication channels.**

- More than 2,500 families and 350 staff members responded to our Reopening Survey in July 2020
- More than 2,800 families and 400 staff members responded to our Reopening Survey in October 2020

## This is what we have learned:

*Families need a choice between in-person and distance learning.*



*Families will have a distance learning option, even when in-person instruction resumes.*

*Students need more social and emotional support.*



*All schedules designate time for teachers to provide additional support.*

*Safety must remain at the forefront of our decision making.*



*SLUSD will not return to in-person instruction until local public health conditions allow.*

*Distance learning must be high quality and student-centered.*



*Our Learning Management Systems serve as the framework for teaching, learning, and support.*

*Communication channels must remain strong to bridge the distance between us.*

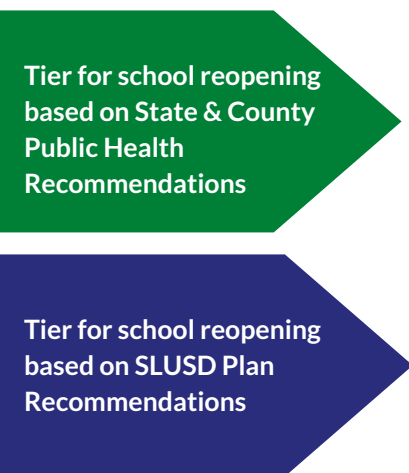


*Frequent updates through ParentSquare keep everyone clear and informed.*

# Phased Reopening Overview



Each district must create its own plan to reopen school facilities and negotiate the impacts with labor partners. Negotiations will result in adjustments to the plan in alignment with state and public health guidance.



Per the State's Blueprint for a Safer Economy, the percentage of new cases dictates when different economic sectors can safely reopen.

State and county public health departments recommend reopening schools when the county has entered the Red Tier (Substantial COVID Spread). Small, in-person cohorts can open at any time.

The SLUSD Plan recommends a phased return to in-person instruction when Alameda County enters into the **Orange Tier** (Moderate COVID Spread).

# Our phases of reopening

*Our current phase*

## PHASE 1: Full distance learning (August 2020)

**School facilities are closed to students.** Through the adoption of learning management systems and new digital curriculum, all students have equitable access to online learning. Limited, in-person after school support is offered to identified high-need student groups with unstable housing and other potential barriers to success with full distance learning. In-person special education assessments and sports conditioning are also taking place in this phase

## PHASE 2: Small group cohorts (Date Pending)

**Targeted student groups return to campus.** These opportunities may include limited instruction and/or targeted supports offered during the school day.

## PHASE 3: In-person/blended model (Date Pending)

**Students return to campus.** Through A/B rotations to allow for social distancing, students return to classrooms for a minimum of two days per week. Distance learning would occur on off-campus days and on one day per week for all students to allow for thorough cleaning and disinfection of school sites.

## PHASE 4: Full in-person learning (Date Pending)

**A return to "regular school".** With sufficient improvement in local public health conditions, full school schedules with full class rostering would be implemented five days per week.

*Distance learning will continue to be an option for students and families for the 2020-2021 school year. We will continue to offer a high-quality distance learning program during all phases.*

# Our proposed schedules



The shift to Phase 3 will require significant modifications for our staff and our students. Knowing this, our attention has been on maintaining distance learning schedules to the best of our ability while creating flexible staffing scenarios for each school. Families will opt-in to In-Person/Blended learning

## Scheduling Phase 3 In-Person/Blended Model Process

1. Determine facility space for in-person learning or support.
2. Identify staff available for in-person instruction or support.
3. Identify students who will be returning based on need or family preference.

**A & B Cohorts:** If there are more students opting to return per staff member, students will be divided into two cohorts.

**Single Cohort:** If there are fewer students opting to return per staff member, those students will come to school four days per week.

## A & B Cohorts

(Two possible models)

Mon	Tue	Wed	Thur	Fri
A	A	Distance Only	B	B

Mon	Tue	Wed	Thur	Fri
A	B	Distance Only	A	B

## Single Cohort

Mon	Tue	Wed	Thur	Fri
A	A	Distance Only	A	A

**Please remember that many variables will impact students' and staff members' abilities to return to campus. The start date for Phase 3 and other details are subject to change based on California and Alameda County Public Health Department guidance and labor agreement negotiations.**

# Science will keep us safe



What we know about COVID-19 has grown rapidly since the onset of the pandemic. With support from local, regional, and national public health experts, we know what must happen for all of us to stay healthy and well.

*This plan is based on the [Alameda County Office of Education's COVID-19 School Guidance](#), the [Alameda County Public Health Department \(ACPHD\)](#), and information from the [Centers for Disease Control \(CDC\)](#).*

## Protecting our community is our HIGHEST PRIORITY

COVID-19 is primarily transmitted through droplet transmission. Transmission happens when respiratory droplets from speaking, yelling, coughing, or singing come in contact with mucous membranes (eyes, nose, mouth).

### To protect ourselves, we need to:

1. Reduce droplet transmission by:
  - a. Requiring masks for all students and staff
  - b. Physical distancing from each other
2. Wash hands frequently and keep surfaces clean by using soap and disinfectants
3. Ensure we are limiting the presence of COVID-19 on our campuses by:
  - a. Opening campuses during periods of low community transmission, as defined by ACPHD
  - b. Symptom screening on a daily basis for all students and staff
  - c. Providing regular COVID-19 surveillance testing



Our signage says it all.

# PRACTICE SAFETY & HYGIENE

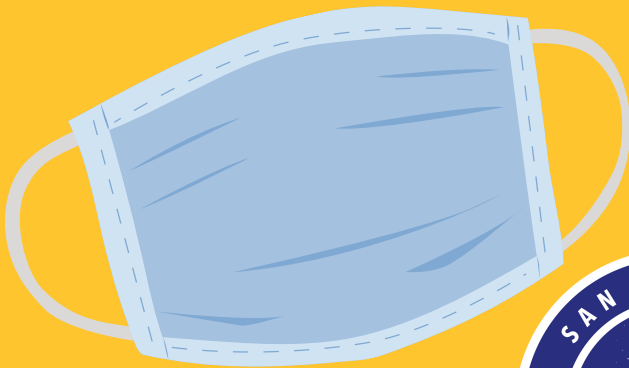
## 遵守安全及衛生

## PRACTIQUE SEGURIDAD E HIGIENE

**Wear a mask**

戴口罩

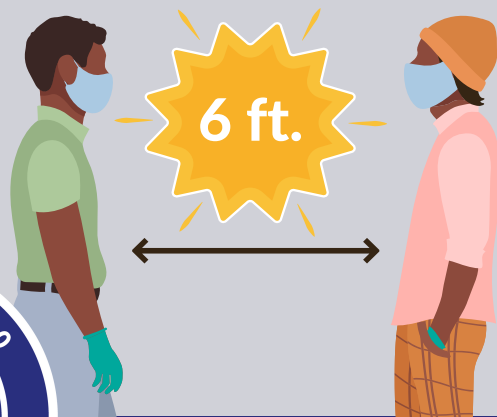
*Usa una mascara*



**Keep your distance**

保持距離

*Mantenga su Distancia*



**Sick?**

**Stay home**

生病? 留在家裡

*Esta enfermo?*

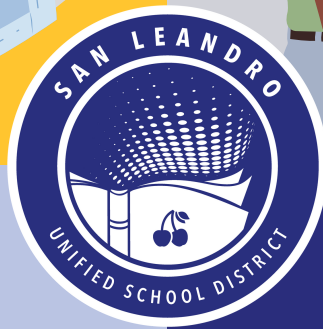
*Quédese en casa*



**Wash your hands**

洗手

*Lávese las manos*





## Key Practices and Knowledge to Reduce Spread of COVID-19 in Schools

As our knowledge of COVID-19 has grown over time, we know that:

- Personal protective equipment (PPE), social distancing, and regular hand washing/sanitizing are the most important ways we can prevent transmission.
- Preventing person-to-person transmission, via respiratory droplets, is more important than frequent cleaning and disinfection. COVID-19 mainly spreads from person-to-person via respiratory droplets.
- Exposure risk is a gradient, rather than an all-or-nothing condition. A rule of thumb is that a person must spend at least 15 minutes within six feet of someone with COVID-19 to be at risk of infection.
- Universal face coverings decrease risk. Being outside is lower risk than being inside. Other risk factors include whether the infected person was sneezing or coughing, or doing an activity that produced more respiratory droplets (not talking < quiet conversation < loud talking < singing).

### COVID-19 Testing

In October, the Alameda County Office of Education signed an agreement with Curative, Inc. to provide COVID-19 Testing for educators within the county. Each district is responsible for developing a plan with Curative to test staff members at a frequency in alignment with state and county guidelines: 25% of staff should be tested every week.

All SLUSD staff working in-person at any school or district facility will be tested for COVID-19 monthly. All staff providing in-person services will receive a COVID-19 test prior to returning to their in-person position.

The state and county do not currently provide guidelines or support for student testing. Students who are experiencing COVID-19 symptoms will be referred to a free testing location and will be required to isolate for a minimum of 10 days or until cleared by a doctor. Any COVID-positive cases among staff or students that occur during In-person learning will initiate a cohort closure for 14 days.



## Contact Tracing

Contact tracing is an essential tool in the epidemiological response to the pandemic. We have developed contact tracing protocols within the district to follow up with every reported COVID-19 case among our staff and students. We follow the Alameda County Public Health Guidance for isolation and quarantine in cases of COVID-19 symptoms, positive tests, or close contact. Our trained staff interview multiple individuals in every positive case to identify any potential close contacts, dates of potential exposure, and locations that need to be deep cleaned. We notify the affected individuals, the Alameda County Public Health Department, district supervisors, and our custodial team, to respond as quickly as possible in support of our staff, students, and community.

## Site & District COVID Liaisons

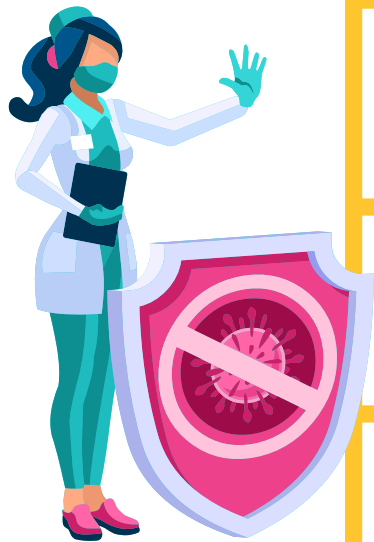
Our School Site Contact Investigators work closely with the District COVID Liaison to collaborate about COVID-related procedures and issues. Their work has been essential in identifying and solving safety problems. The District COVID Liaison works directly with the Alameda County Public Health Department to update internal guidance when public health directives are updated.

## Triggers for Switching to Distance Learning

According to the current ACPHD guidelines, school closure is recommended based on the number of cases, the percentage of the teachers, students, and staff that are positive for COVID-19, and following consultation with the ACPHD. Specifically, if 5% of students and teachers in a classroom test positive for the virus, the classroom would be closed, followed by 14 days of quarantine. If a school experienced a 5% positive testing rate of both students and teachers, the entire school would have to close, with everyone subject to 14 days of quarantine. If 1 in 4 schools in a district had a 5% positive rate, the district would shut down. The local public health officer may also determine school campus closure is warranted for other reasons, including results from public health investigation or other local epidemiological data.

## Health Screenings

The [SLUSD Student COVID-19 protocol](#) includes how ill students or staff will be separated from others and sent home immediately. Principals will need to identify isolation spaces and a supervision plan for those spaces. The District COVID-19 Liaison put together the protocol to provide guidance for District staff who are responsible for addressing suspected/confirmed COVID-19 within the District's student population.



For Principals/Supervisors: COVID Protocol for Positive Cases, Symptoms, Close Contact		
	Notification Letters	When can they return?
<p><b>1</b> Positive Case</p>	<ul style="list-style-type: none"> <li>• Individual</li> <li>• Close Contacts</li> <li>• Community</li> <li>• Custodial</li> <li>• County</li> </ul>	<p>10 days after first symptom AND 1 day free of fever and with improving symptoms</p>
<p><b>2</b> Symptoms</p>	<ul style="list-style-type: none"> <li>• Individual</li> </ul>	<p>10 days after first symptom AND 1 day free of fever and with improving symptoms OR as cleared by doctor</p>
<p><b>3</b> Close Contact</p>	<ul style="list-style-type: none"> <li>• Individual</li> </ul>	<p>14 days since close contact</p>

# Personal Protective Equipment



**Wearing masks is a part of our daily lives. Personal protective equipment (PPE) is critical to ensuring safety for all. We have inventory and systems to make it easy for schools to get the PPE they need for staff and students.**

- 1. Face coverings are required** (except when eating or drinking) for all students and staff, with the exception of students who are unable to wear them due to particular developmental or health diagnoses that would limit their ability to wear a face covering. Face shields can be provided in these cases as an alternative.
- 2. Teachers can use face shields**, which enable younger students to see their teachers' faces and to avoid potential barriers to phonological instruction. Face shields will be provided to teachers who desire this option. Face shields should be worn over a mask or with a drape to prevent airborne particles from entering inside or escaping from the face shield.
- 3. Soap and hand sanitizer reduce disease transmission** and will be available and handy in all classrooms, bathrooms, main offices, entrance to the school, cafeteria, etc. Everyone must sanitize upon entering and exiting school and cafeteria and bathrooms.
- 4. PPE signage provided by SLUSD is posted at every school and office entrance**, and can serve as a helpful reminder to everyone. Additional signage is being placed throughout school buildings in classrooms, restrooms, on floors and walls inside and outside, in preparation for students' return.
- 5. Specialized PPE** is appropriate for staff who will perform aerosolizing procedures and come into close contact with individuals who are symptomatic, some staff who work with students with moderate to severe disabilities, and for custodial staff who use aerosolizing sprays during cleaning procedures.

# How our schools will stay safe & clean



Our new safety procedures will require everyone's attention to their very active roles and responsibilities. But it will be as easy as 1-2-3!

1

## Every day begins with ParentSquare Health Screening

Using the ParentSquare Health Portal, families will answer questions about their student's daily health while also providing real-time, confidential data schools can use to note the broad occurrence of symptoms on a school campus. Families participating in on-campus learning must complete the health screening prior to arriving on campus.

**Families and staff should immediately contact their school's principal to report a positive COVID-19 test, even if they complete the ParentSquare screening.**

2

## Face coverings for EVERYONE

All students and all staff will be required to wear face coverings over their mouth and nose while on any school campus. There is an exemption for students and staff unable to wear a face covering due to special circumstances such as a documented developmental or health diagnosis that limits their ability to wear a face covering. In these cases, face shields are permissible as a substitute with a cloth drape secured across the bottom.

**While students are encouraged to bring their own face coverings to school, all schools are equipped to provide face coverings when necessary.**

3

## Maintain 6 feet physical distance at all times

All staff and students must keep at least six feet apart from one another during the school day, following guidance from the Alameda County Department of Public Health and County Office of Education. Students will enter and exit schools through designated entrances. Arrival, departure, restroom, recess, and other movement procedures throughout our school campuses are specific to each school site and will be communicated by your site administrator. **Failure to adhere to the requirements listed above will result in removal from in-person learning.**

## Everyone's active participation in following these healthy hygiene practices will greatly reduce the spread of illness, including COVID-19



### Hand Washing/Sanitizing

Staff and students should be washing their hands, or using a hand sanitizer that is at least 60% alcohol, multiple times each day.

- All individuals entering the school campus should wash their hands or use hand sanitizer; individuals should also clean their hands after using the restroom, before and after lunch, and after sneezing.
- Hand sanitizer will be available in all classrooms throughout the district.
- Hand soap and paper towels will be provided for all bathrooms and classroom sinks throughout the district.

### Stable Groups

One of the most key recommendations from the Alameda County Department of Public Health is that we maintain stable groups of students in each classroom. This is done both to mitigate the spread of COVID-19 and to assist in contact tracing and isolation procedures should an exposure occur. Keeping teachers and students in the same group also lowers their exposure risk by decreasing the number of people they come into contact with.



### Accordingly, we will:

- Keep cohorts as small as possible, while also working to ensure that groups are heterogeneous.
- Limit cross-over of students and teachers to the extent possible. Cross-over of teachers between cohorts is permitted to meet students' educational needs.
- Prohibit larger gatherings of more than one cohort (i.e., school assemblies or performances).
- Require a 14-day Close Contact quarantine of all cohort members, including staff, if there is a COVID-positive case within the cohort.
- Require a 14-day Close Contact quarantine of the whole school, if two cohorts are quarantined for evidence of positive cases.
- Close all schools to In-Person Learning, if one-quarter of schools in the district are closed due to COVID-19 quarantines.

## Student Nutrition/Meal Time

We will provide free, healthy, nutritious food to our students and families throughout the school year, in every phase of reopening. While in distance learning, we will continue to distribute food at our 7 distribution sites.

When we are able to return to in-person instruction, to minimize the risk of virus transmission, we will continue to distribute grab-and-go meals at our current distribution sites under the same schedule that has been implemented since the beginning of this school year. As we begin the phased reopening of schools, we will analyze ways we can accommodate meal distribution for those students who are on campus. Parents and guardians may also pick up meals for their children without an ID. Students do not have to be present

## Students & Public Transportation

All of our district transportation vendors will be physically distancing students on their buses for the 20-21 school year. AC Transit and BART are limiting the number of passengers on their buses/trains to allow for physical distancing. Face coverings are required on all public and school district transportation. Families need to ensure they are taking students' temperatures and checking for symptoms BEFORE they board the bus for school.

## Keeping Campuses Clean

We are following health guidelines to ensure that high-touch surfaces are cleaned frequently, common spaces are cleaned and sanitized in between different groups of students, and all bathrooms are cleaned and restocked multiple times a day.

### Additionally, when In-person instruction begins we will:

- Limit sharing of art supplies, manipulatives, and other high-touch materials as much as possible.
- If feasible, have a separate set of supplies for each student and keep each student's supplies and belongings in separate, individually labeled bags, boxes or cubbies.
- Ask students to limit the amount of personal belongings they bring to campus each day.
- Avoid sharing electronic devices, sports equipment, books, and learning aids when feasible.
- Clean and disinfect shared supplies and equipment between students.



# Cleaning & sanitizing is routine



## **Our custodial staff has plans to ensure sanitary, safe environments for our students and staff.**

We use cleaning solutions that are compliant with EPA standards for COVID-19 disinfection and are safe to use in schools. Custodians have the appropriate PPE (gloves, eye protection, protective clothing, face shields, and masks) for the cleaning task. Our new electrostatic sprayers are used to disinfect classrooms, common areas, and bathrooms, and will disinfect high touch point areas like door handles, switches, and faucets on a regular cleaning schedule. All classrooms and offices are supplied with hand sanitizer.

Beginning October 16, ACPHD allowed for use of playgrounds that follow the State's Outdoor Playgrounds and other Outdoor Recreational Facilities guidance. We follow the guidelines for playgrounds which include:

- While on the playground, cohorts will maintain separation and avoid mixing. Schools have developed schedules where cohorts will use the play structures at designated times.
- No eating or drinking on the playground, to ensure face masks are worn at all times.
- Wash or sanitize hands before and after using the playground.
- Children who are supervised by the same adult must stay together in the same play area or play structure at all times, to allow active supervision.
- Child care programs, schools, out-of-school time programs, and other programs for children and youth where children must remain in cohorts may not use school playgrounds during times when they are open to the public.

We have modified the HVAC system at all schools to allow for maximum outside air. The units are set so that they can be continuously run when rooms are occupied. All filters have been upgraded to MERV 13 filters. Teachers and staff will be encouraged to open exterior doors and operable windows when safe, to increase outside airflow.

# How we support our community



## Collaboration with our key stakeholders helps us navigate uncertain times and create solutions that work for the entire community.

We have either signed or are actively negotiating separate Memorandums of Understanding (MOU) with and the San Leandro Teachers Association (SLTA) CSEA Reopening MOU Chapter #94, and Teamster/Trades MOU as they relate to working conditions in all phases of reopening. These MOUs include safety protocols, Personal Protective Equipment (PPE) stipulations along with training and professional development for personnel hygiene and proper use of PPE.

We also have an Injury and Illness Prevention Plan (IIPP) which establishes the processes and procedures in the event a staff member becomes injured or ill in the workplace. The IIPP has a COVID-19 addendum that directly addresses personal hygiene, cough and sneeze etiquette, physical distancing, face coverings, protocols for suspected ill staff, proper use of personal protective equipment, and compliance with the IIPP.

The SLUSD School Board approved the BP 0470(a) COVID 19 Mitigation Plan, which follows the guidance of the US Department of Labor Occupational Safety and Health Act (OSHA) Office, Alameda County Department of Public Health (ACPHD), California Department of Public Health (CDPH), the Center for Disease Control (CDC) and other government agencies when planning for the procurement and distribution of supplies intended to prevent the transmission of COVID-19.

- OSHA Guidance on Preparing Workplaces for COVID-19
- ACOE/ACPHD School Reopening Plans (July 2, 2020)
- CDC COVID-19: Considerations for Schools (May 19th, 2020)
- CDC COVID-19: Cleaning and Disinfecting Facilities (April 14, 2020)
- CDPH Guidance for Schools (June 5, 2020)
- NASN PPE Consideration for Healthcare Staff or Staff Providing Educational Support to Selected Students (May 22, 2020)



# Staff & Family Education



## Community health is everyone's responsibility.

### Families

While we are making every effort to protect our community's health on campus, we rely on each family to protect the health of our SLUSD community as well. All who wish to return to school sites, in-person, will be asked to sign the Parent/Guardian Daily Health Screening Commitment Form and to uphold the SLUSD Family and Student Health Pact. Any student without a signed commitment form can not participate in-person.

All students participating in in-person learning are expected to follow all health and safety guidelines related to COVID-19. Students who choose not to follow these guidelines may not be allowed to participate in in-person learning. School administrators will use specific guidelines for students who do comply with the health and safety protocols. Principals will communicate plans and training concerning site health and safety protocols which will be held with parents during a Zoom meeting and a recording of this training will be available on school websites.

### Staff

All SLUSD employees have completed the following professional development modules to ensure compliance with the safety protocols of the IIPP and COVID-19 addendum.

- Coronavirus Awareness - Keenan Training
- Coronavirus: Cleaning and Disinfecting Your Workplace (Full Course)



# Returning to campus checklist



## Before returning to campus:

- Complete the family health pact
- Watch training videos with your student
- Make sure your child is up-to-date with all vaccinations, including for flu
- Remind your child about precautions to take at school
  - Wash and sanitize hands more often
  - Keep physical distance and avoid sharing objects
  - Wear a face covering
  - Tell a teacher or adult if feeling sick
- Develop before and after school routines:  
Things to pack for school in the morning (hand sanitizer and face coverings) and things to do when returning home (wash hands immediately and wash face coverings)

## Daily Health Screening

- Download the ParentSquare app
- Be familiar with local COVID-19 testing sites, in the event your student develops symptoms
- Begin ParentSquare screening on student's return date
- Keep your child home if your child has symptoms, or if your child has had close contact with COVID-19

## Bring to School

- Two (2) face coverings
- Personal refillable water bottle
- Personal hand sanitizer

# Other resources & further information

This public health crisis has required us all to remain collaborative and educated on the latest information from trusted resources. We will continue to update you with the most recent guidance that provides the foundation of our planning and preparation.

## COVID-19 RESOURCES AND INFORMATION

- [Alameda County Public Health Department \(ACPHD\)](#)
- [California Department of Public Health \(CDPH\)](#)
- [CA.gov COVID-19 Website](#)
- [Centers for Disease Control & Prevention \(CDC\)](#)

## MASK AND FACE COVERINGS

- [CDC: The Correct Use of a Mask](#)
- [CDC: How to Select, Wear, and Clean a Mask](#)
- [CDC: How to Make a Mask](#)

## SCHOOL REOPENING GUIDANCE

- [Alameda County Office of Education Reopening Guidance](#)
- [CDE: Coronavirus Response and School Reopening Guidance](#)



Go to [www.slusd.us](http://www.slusd.us) for the latest news or if you have further questions.

# Schools to be reopened

## **Garfield Elementary**

13050 Aurora Drive  
San Leandro, CA 94577  
# of Students Returning: 319  
# of Staff Returning: 35  
Grade Levels Served: TK-5 and  
Preschool SDC  
Grade Levels to be Reopened:  
TK-5 and Preschool SDC

## **Monroe Elementary**

3750 Monterey Blvd.  
San Leandro, CA 94578  
# of Students Returning: 414  
# of Staff Returning: 38  
Grade Levels Served: TK-5  
Grade Levels to be Reopened:  
TK-5

## **Bancroft Middle School**

1150 Bancroft Ave.  
San Leandro, CA 94577  
# of Students Returning: 955  
# of Staff Returning: 73  
Grade Levels Served: 6-8  
Grade Levels to be Reopened:  
6-8

## **Jefferson Elementary**

14300 Bancroft Ave.  
San Leandro, CA 94578  
# of Students Returning: 541  
# of Staff Returning: 49  
Grade Levels Served: TK-5 and  
Preschool SDC  
Grade Levels to be Reopened:  
TK-5 and Preschool SDC

## **Roosevelt Elementary**

951 Dowling Blvd.  
San Leandro, CA 94577  
# of Students Returning: 523  
# of Staff Returning: 43  
Grade Levels Served: K-5  
Grade Levels to be Reopened:  
K-5

## **John Muir Middle School**

1444 Williams Street  
San Leandro, CA 94577  
# of Students Returning: 972  
# of Staff Returning: 88  
Grade Levels Served: 6-8  
Grade Levels to be Reopened:  
6-8

## **Madison Elementary**

14751 Juniper St.  
San Leandro, CA 94579  
# of Students Returning: 579  
# of Staff Returning: 57  
Grade Levels Served: TK-5  
Grade Levels to be Reopened:  
TK-5

## **Washington Elementary**

250 Dutton Avenue  
San Leandro, CA 94577  
# of Students Returning: 441  
# of Staff Returning: 34  
Grade Levels Served: K-5  
Grade Levels to be Reopened:  
K-5

## **San Leandro High School**

2200 Bancroft Avenue  
San Leandro, CA 94577  
# of Students Returning: 2687  
# of Staff Returning: 211  
Grade Levels Served: 9-12  
Grade Levels to be Reopened:  
9-12

## **McKinley Elementary**

2150 E. 14th St.  
San Leandro, CA 94577  
# of Students Returning: 447  
# of Staff Returning: 36  
Grade Levels Served: TK-5  
Grade Levels to be Reopened:  
TK-5

## **Wilson Elementary**

1300 Williams Street  
San Leandro, CA 94577  
# of Students Returning: 750  
# of Staff Returning: 62  
Grade Levels Served: TK-5 and  
Preschool SDC  
Grade Levels to be Reopened:  
TK-5 and Preschool SDC

## **Lincoln Alternative High School**

2600 Teagarden Street  
San Leandro, CA 94577  
# of Students Returning: 175  
# of Staff Returning: 16  
Grade Levels Served: 10-12  
Grade Levels to be Reopened:  
10-12