

Local Control and Accountability Plan

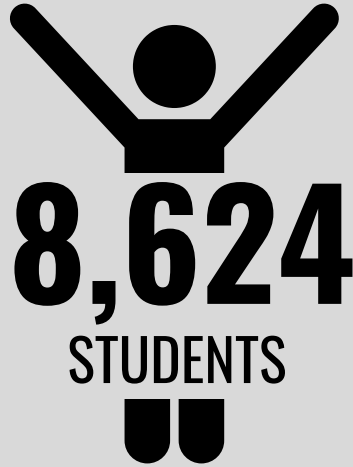


District Overview

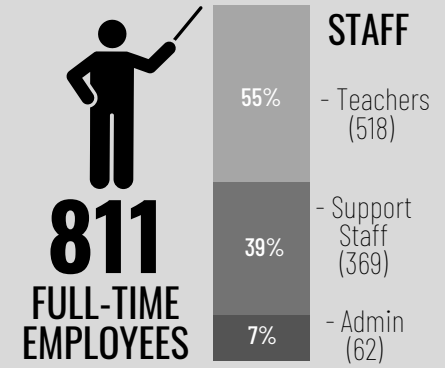
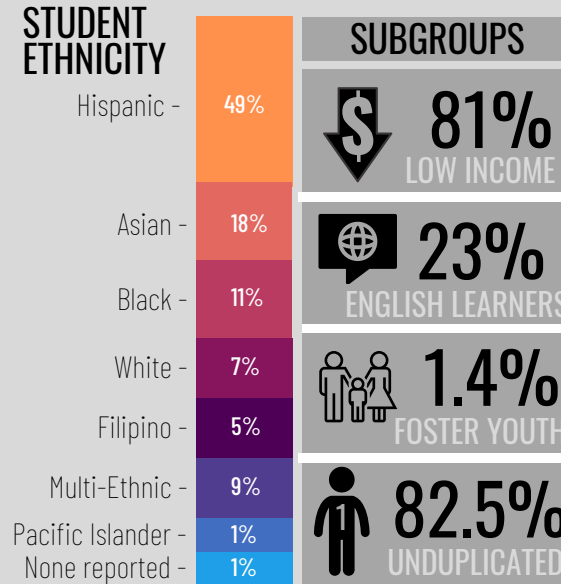


14
SCHOOLS

Elementary: 8 Adult: 1
Middle: 2 Virtual: 1
High: 2

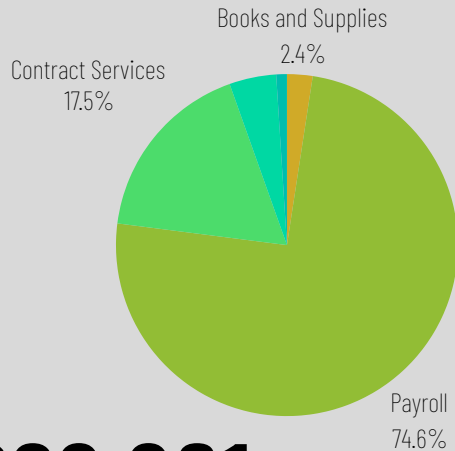


8,624
STUDENTS

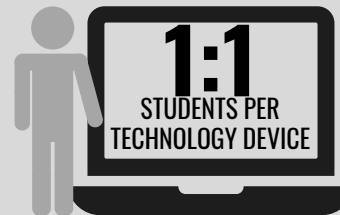
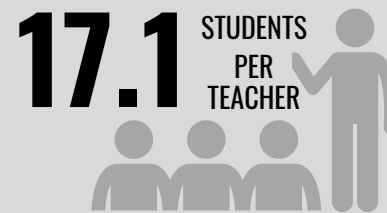


TOTAL GENERAL FUND EXPENDITURES

Payroll: \$139,012,687
Contract Services: \$32,661,436
Books/Supplies: \$4,501,673
Capital Expenditures: \$8,268,241
Total General Fund Expenditures:
Transfers/Other: 1,876,024



\$186,320,061



Plan de Control y Rendición de Cuentas Local

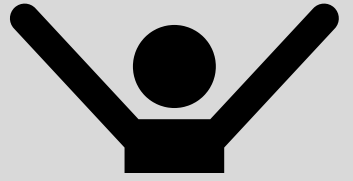


Descripción general del distrito



14
ESCUELAS

Primaria: 8 Adulto: 1
Secundaria: 2 Virtual: 1
Alto: 2



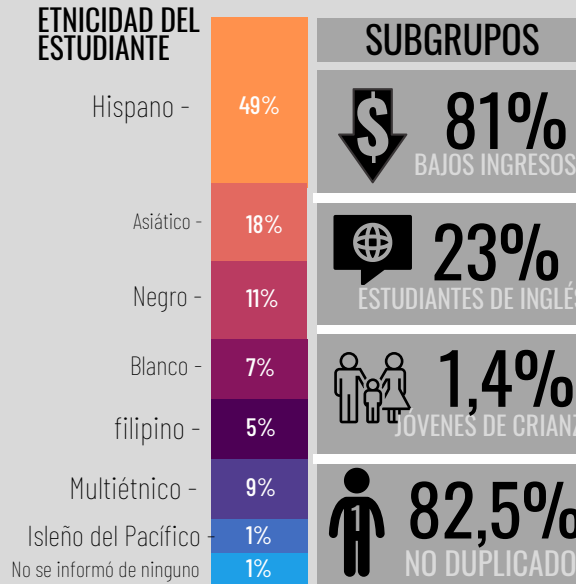
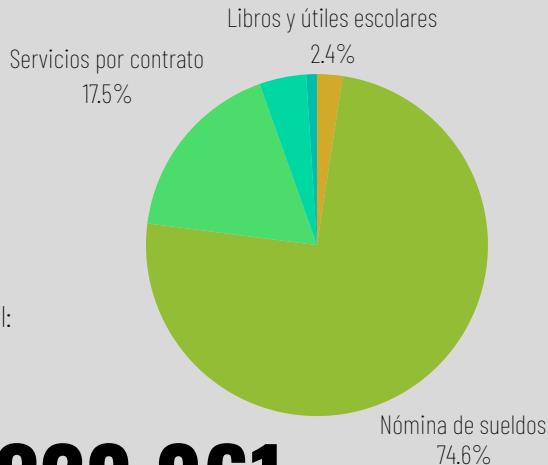
8,624
ESTUDIANTES



GASTOS TOTALES DEL FONDO GENERAL

Nómina: \$139,012,687 Servicios contractuales: \$32,661,436
Libros/materiales: \$4,501,673
Gastos de capital: \$8,268,241
Gastos totales del fondo general:
Transferencias/Otros: 1.876.024

\$186,320,061



17.1 ALUMNOS POR DOCENTE

1:1 ESTUDIANTES POR DISPOSITIVO TECNOLÓGICO

San Leandro Unificado
\$21,020
Gasto anual por estudiante