

# Local Control and Accountability Plan



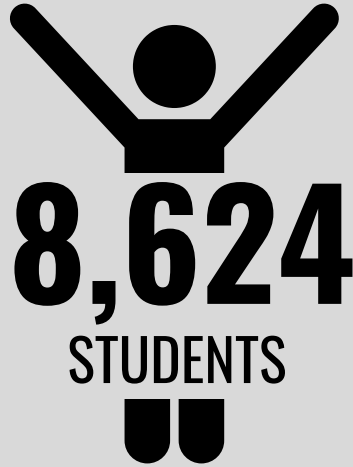
## District Overview



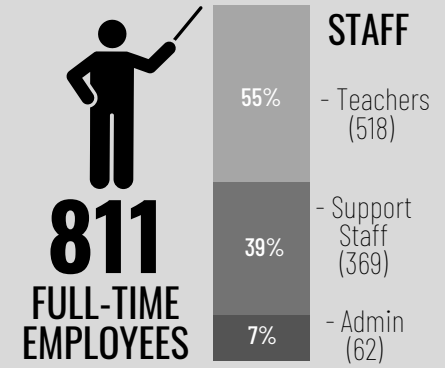
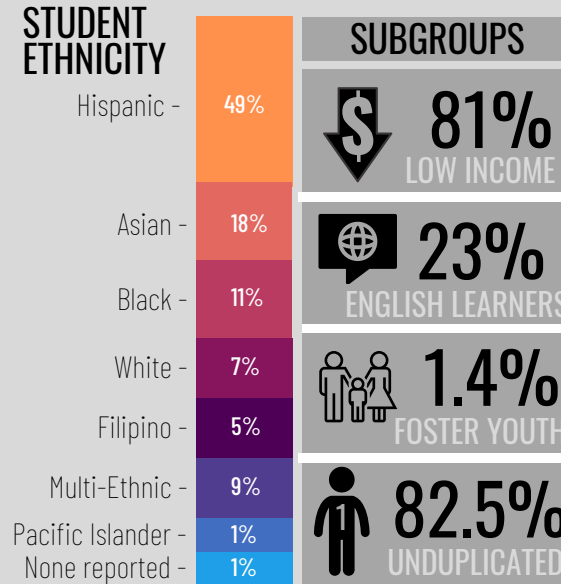
**14**  
SCHOOLS

Elementary: 8  
Middle: 2  
High: 2

Adult: 1  
Virtual: 1

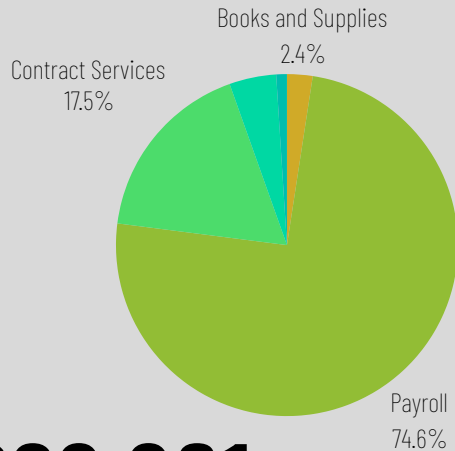


**8,624**  
STUDENTS



### TOTAL GENERAL FUND EXPENDITURES

Payroll: \$139,012,687  
 Contract Services: \$32,661,436  
 Books/Supplies: \$4,501,673  
 Capital Expenditures: \$8,268,241  
 Total General Fund Expenditures:  
 Transfers/Other: 1,876,024



**\$186,320,061**

